

# TENMARS

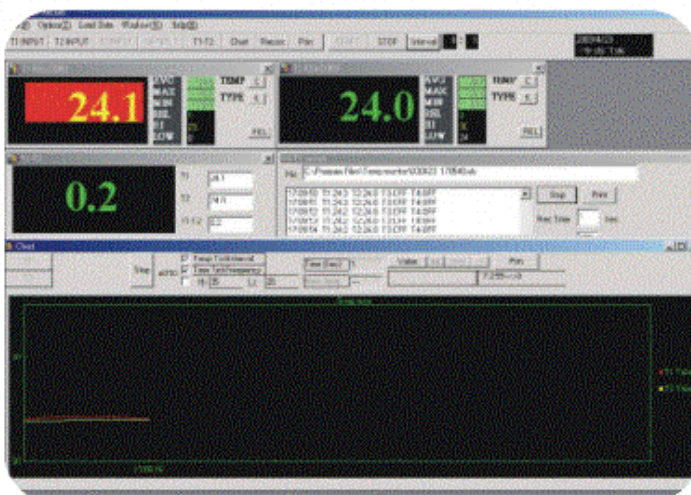
## DIGITAL THERMOMETERS

MULTI FUNCTION K/J/E/T/R/S/N TYPES  
SINGLE / DUAL / TRIPLE / FOUR CHANNELS  
RS-232 INTERFACE, DATA LOGGER

TM-7XX  
series

### FEATURES

- 4 digits LCD display, Back Light
- Resolution 0.1°C/0.1°F, 1°C/1°F...
- Function keys: °C/°F/K, MAX, MIN, AVG, HOLD, REL, LIMIT, Hi/Lo, TYPE, COUNT, TIME, CLOCK, CHANNEL, T1-T2, T3-T4, BACK LIGHT, RS-232, REC, CALL.
- Auto power off/on, Low battery indication.
- RS-232 Interface With Window Software.
- 10000 records data logger for each channel
- Call-fit To Quick Read Memory Data. (50 page/sec)
- With a Perpetual Calendar Function.
- R03 (AB)/SIZE AAA 1.5V/UM-4 x 4pcs, battery life 500 hours



# TENMARS

## DIGITAL THERMOMETERS

MULTI FUNCTION K/J/E/T/R/S/N TYPES  
SINGLE / DUAL / TRIPLE / TETRAD CHANNELS  
RS-232 INTERFACE, DATA LOGGER

**TM-7xx**  
**series**

### SPECIFICATIONS

Thermocouples Measurement range	K Type: -100 °C ~ 1300 °C (-148 °F ~ 2372 °F) J Type: -100 °C ~ 1000 °C (-148 °F ~ 1832 °F) E Type: -50 °C ~ 800 °C (-58 °F ~ 1472 °F) T Type: -100 °C ~ 400 °C (-148 °F ~ 752 °F) R/S Type: 0 °C ~ 1700 °C (32 °F ~ 3092 °F) N Type: -100 °C ~ 1300 °C (-148 °F ~ 2372 °F)
Accuracy (At 23°C ±5°C, below 80%RH)	<u>K/J/E/T Type:</u> -100 °C ~ 1300 °C: ±(0.1% rdg + 0.7 °C) -148 °F ~ 2372 °F: ±(0.1% rdg + 1.4 °F) <u>R/S Type:</u> 0 °C ~ 1700 °C: ±(0.1% rdg + 2 °C) 32 °F ~ 3092 °F: ±(0.1% rdg + 4 °F) <u>N Type:</u> -100 °C ~ 1300 °C: ±(0.1% rdg + 1.5 °C) -148 °F ~ 2372 °F: ±(0.1% rdg + 3 °F)
Operation temperature and humidity	0 °C ~ 50 °C (32 °F ~ 122 °F), 0 ~ 80% RH
Storage temperature and humidity	-20 °C ~ 60 °C (-4 °F ~ 140 °F), 0 ~ 80% RH
Power supply	R03(AB)/ SIZE AAA 1.5V/UM-4 × 4PCS
Input protection at thermocouple input	AC/DC 24V Maximum
Dimension: (Without holster)	164 mm X 76 mm x 32 mm
Weight	Approx. 270 g

### ORDERING INFORMATION

TM-7    series

- |                     |                           |
|---------------------|---------------------------|
| 1. – Single Channel | 1. – K Type.              |
| 2. – Dual Channel   | 2. – K/J Types.           |
| 3. – Triple Channel | 4. – K/J/E/T Types.       |
| 4. – Tetrad Channel | 7. – K/J/E/T/R/S/N Types. |

- |                          |  |
|--------------------------|--|
| <input type="checkbox"/> | – Basic equipment<br>(No Back Light)             |
| R                        | – RS-232 Interface<br>(Include Back Light LCD)   |
| D                        | – RS-232+Data Logger<br>(Include Back Light LCD) |