



### Overview

Tinytag Explorer is the principal software for operating Tinytag data loggers.

This Windows based program is simple and intuitive to use, allowing users to easily manage both Tinytag loggers and recorded data.

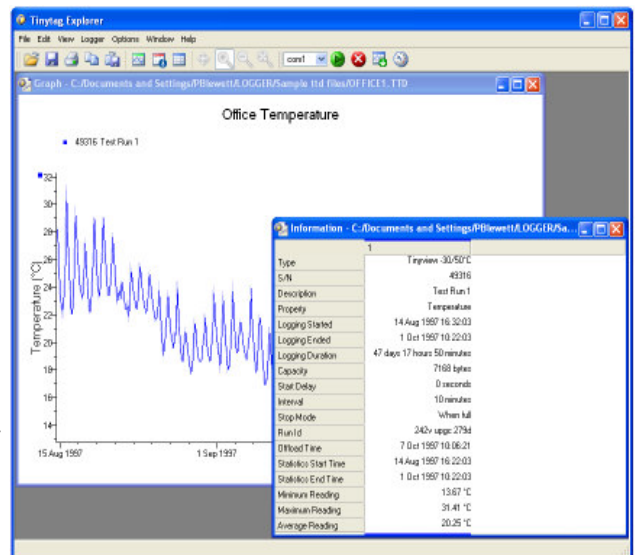
A step-by-step launch page guides the user through the set up of a logger and a printable confirmation screen then verifies the settings the unit has been started with.

When offloaded, recorded data is initially presented as a graph but can also be displayed as a table of readings if required (these views are supplemented with an information view that summaries details of the data being shown). Data can easily be exported from all three views into programs such as MS Excel and Word, either as a file or by simply copying and pasting.

There is also a comprehensive, illustrated help file to take you through the basics of the software, and all of its more advanced features.

### Key Features

- Simple step-by-step set up page
- Linked graph, readings and statistics views
- Easy to configure graph axis and traces
- Overlay feature that allows multiple recordings to be shown on the same graph.
- Click and drag zoom
- Absolute/Relative time display
- Simple Copy and Paste export
- TXT, CSV and XML export formats
- Password protection for logger security
- Run ID feature that creates a unique, traceable code for each recording
- Calibration reminder for Gemini calibrated data loggers
- Current reading feature that allows the user to check their logger
- Easy update feature
- Setpoint tool to highlight specific values
- Illustrated and comprehensive Help file.



### System Specification

Tinytag Explorer requires a PC with the following specification:

**Operating System:** Windows 98 Second Edition, Windows 2000 or Windows XP (XP recommended).

**Browser:** Internet Explorer version 5 or 6.

**Processor:** 200 MHz Pentium III processor or better (1.6GHz recommended).

**Memory:** 64 Mb ram when running Windows 98. Other operating systems will need more (256/512Mb with XP).

**Hard Disk Space:** At least 10 Mb available hard disk space (120Mb recommended).

**Monitor:** Super VGA monitor, minimum 256 colours, resolution 800 x 600 (15" Monitor with 16 bit colour, 800 x 600 resolution or greater recommended).

The recommended options should give the user ample performance to run other applications such as MS Excel, Word etc at the same time as Tinytag Explorer.