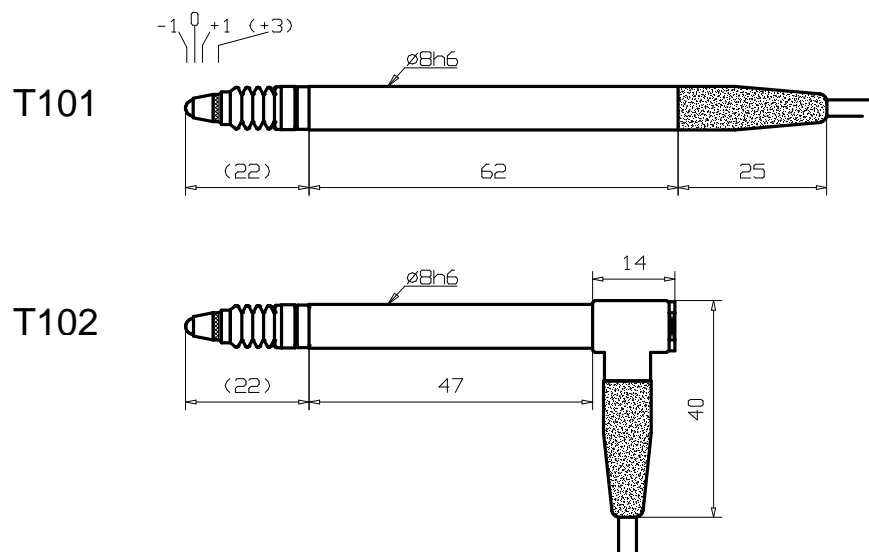


Transducer T101 / T102

±2 mm Measuring stroke, spring advanced

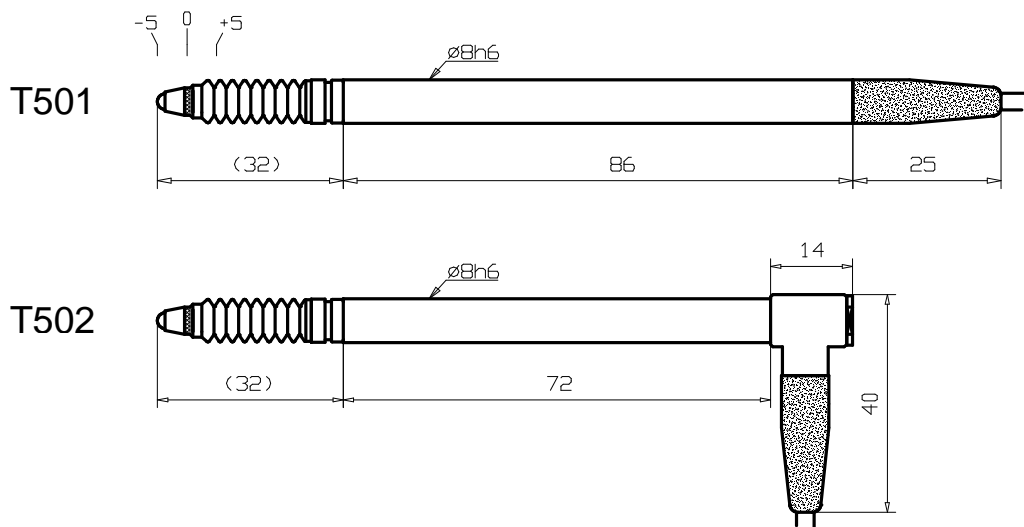
| | |
|-------------------|--|
| Models | T101 axial cable exit T102 radial cable exit |
| Maximum stroke | 4.6 mm |
| Measuring stroke | ±2 mm |
| Pretravel | adjustable |
| Bearing | ball bearing |
| Life | > 10 Mio. cycles |
| Tip rotation | 1 ° over full stroke |
| Temperature range | -10 bis +65 °C, operation & storage |
| Mounting position | any |
| Tip | 3 mm tungsten carbide ball, M2.5 fixing thread, exchangeable |
| Gaiter | Viton |
| Body diameter | 8h6 |
| Cable | PUR, length 2 m |
| Plug | 5 pin, 270° |
| Lift off | n.a. |
| Spring rate | 0.63 N ±20 % (at electrical zero) spring rates from 0.25 N to 4 N as option |
| Repeatability | 0.01 µm |
| Linearity error | 0.3 % in ±1'000 µm Range (at 20 °C ±1°C) |
| Sensitivity | 73.75 ±0.15 mV/(V·mm) (into R = 2 kΩ ±0.1 %) |
| Drive frequency | 13 kHz ±5 % |
| Supply voltage | 3 V ±0.5 % RMS |
| Coil form | halfbridge |
| Repair | possible, unit can be disassembled |



Transducer T501 / T502

±5 mm Measuring stroke, spring advanced

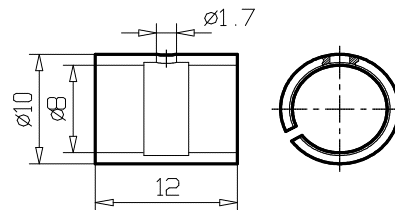
| | |
|-------------------|--|
| Models | T501 axial cable exit T502 radial cable exit |
| Maximum stroke | 10.6 mm |
| Measuring stroke | ±5 mm |
| Pretravel | adjustable |
| Bearing | ball bearing |
| Life | > 10 Mio. cycles |
| Tip rotation | 1 ° over full stroke |
| Temperature range | -10 bis +65 °C, operation & storage |
| Mounting position | any |
| Tip | 3 mm tungsten carbide ball, M2.5 fixing thread, exchangeable |
| Gaiter | Viton |
| Body diameter | 8h6 |
| Cable | PUR, length 2 m |
| Plug | 5 pin, 270° |
| Lift off | n.a. |
| Spring rate | 1 N ±15 % (at electrical zero) 1.6 N as option |
| Repeatability | 0.05 µm |
| Linearity error | 0.9 % in ±5'000 µm Range (at 20 °C ±1°C) |
| Sensitivity | 7.38 ±0.02 mV/(V·mm) (into R = 2 kΩ ±0.1 %), (standard setting 1 : 10) 29.50 ±0.06 mV/(V·mm) (into R = 2 kΩ ±0.1 %), (optional setting 1 : 2.5) |
| Drive frequency | 13 kHz ±5 % |
| Supply voltage | 3 V ±0.5 % RMS |
| Coil form | halfbridge |
| Repair | possible, unit can be disassembled |



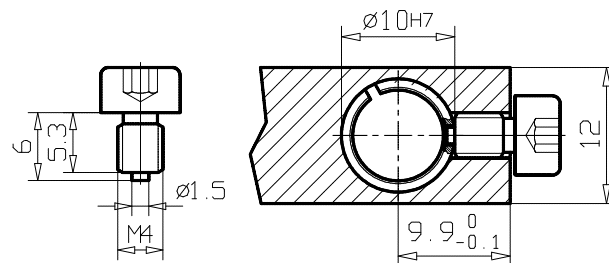
Accessories 2 for transducers T-series

Fixing hardware

T100/630 Clampbush



T100/631 Clampscrew



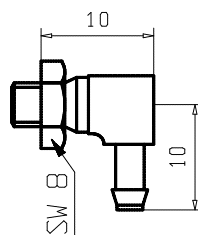
Extension cables

- T100/781 length = 1.0 m
- T100/782 length = 2.5 m
- T100/785 length = 5.0 m
- T100/787 length = 7.5 m
- T100/790 length = 10.0 m



Pneumatic connection

T100/481 Nippel, rotating 360° rotating



The 2 versions

Standard T100/480

Nippel, rotating T100/481

