

Connection Details

- 3, VBAT : Battery +ve
- 4, N.C. : Reserved
- 5, GLED : Green LED anode
- 6, RLED : Red LED anode
- 7, TX-B : RS-232 Transmit
- 8, NC : Reserved
- 9, RX-A : RS-232 Receive
- 10, SENSE : Signals reading
 - 11 : Do not connect
- 12, VREF : 2.5V Reference
 - 13 : Do not connect
 - 14 : Do not connect
 - 15 : Do not connect
 - 16 : Do not connect
- 17, GND : Power and signal 0V
- 18, IN : Current Signal Input

Note:

PCB edge mates with 0.1" IDC female edge connector such as RS Part No. 471-317. Refer to manual for full electrical spec.

Features

- Memory Size : 16k (Non-volatile)
- No. of Readings : 16000 (approx)
- Resolution : 8 bit
- Delayed Start : Relative / Actual up to 45 days
- Stop Options : When Full After n Readings Never (Wrap around)
- Reading Types : Actual, Min, Max.
- Logging Interval : 1 sec to 10 days
- Offload : While stopped or when logging in minute multiples
- Alarms : Two, fully Programmable
- Functional Range : -40°C → +85°C / -40°F → +185°F
- Battery Life : Up to 5 years

Note: The LEDs are supplied, not fitted to the PCB.

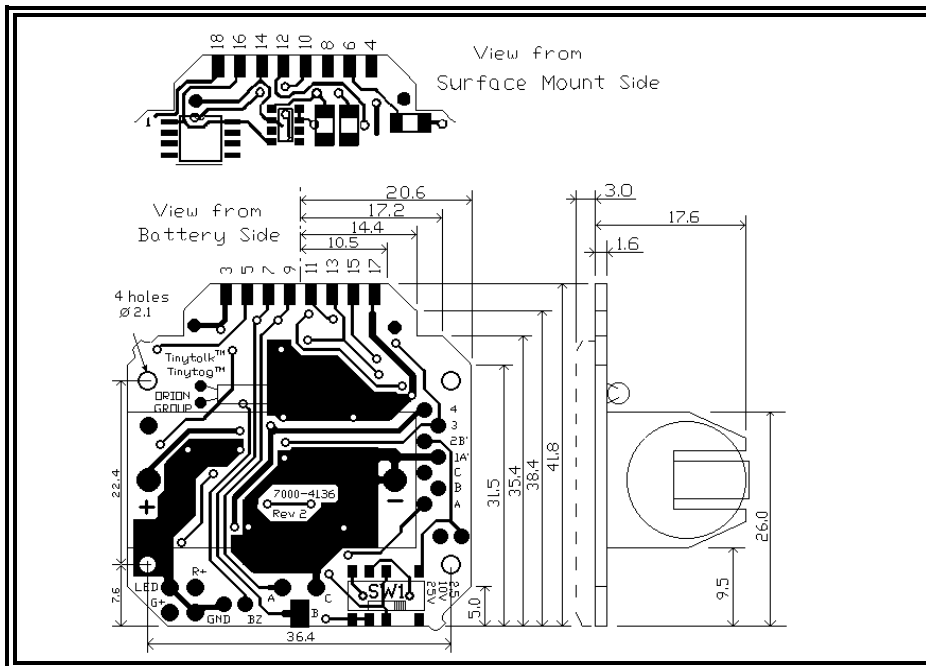
Input Specification

- Range : 0 → 20mA
- Maximum Input : 50mA
- Input Impedance : 10 ohms
- Resolution : 0.08mA
- Accuracy : ± 0.1mA ± 0.6% of reading

Notes:

The Current Logger records the current flowing from the input to ground. This logger forms part of the Tinytag Plus Re-educatable range. It can be used with the factory set units, 0 to 200mV, or with Re-Educator Software it can be changed to suit the range and units of the particular sensor to be attached.

Battery replacement is recommended every 2 years. Replace with 3.6V 1/2AA Lithium cells (Available from your Tinytag stockist). Stop the unit logging before replacing the battery.



Approvals

This equipment complies with part 15 of the FCC Rules. Operation is subject to the following two conditions: (1) this device may not cause any harmful interference, and (2) this device must accept any interference received, including interference that may cause undesired operation.

This product is manufactured by Gemini Data Loggers (UK) Ltd to BS EN ISO 9001:2000 (Certificate No. 6134), and is CE approved to EN50081 part 1:1992 and EN50082 part 1 and 2:1992/95 with any standard leads or probes supplied.



NAMAS traceable calibration certificates are available on individual units.

Interface Information and Related Products

To use your Tiny Data Logger you will require:

Tinytag interface cable (CAB-0007), PC with GLM for Windows™ (SW-0009) or Easyview for Windows 95™ (SW-0500).

To change ranges and/or units you will need a PC, with Re-Educator Software V2.2 or above (SW-0506) and interface cable.

Further Related Products:

TGPR-0700 Tinytag Plus Re-ed Volt: 0 to 2.5V/10V/25V logger, PCB only, for OEM use.

TGPR-1000 Tinytag Plus Re-ed mV: 0 to 200 mV logger, PCB only, for OEM use.