

DR Series

Features:

- . PBT Housing
- . IP 66 Protection



Specification:

Item	Type	Diffuse Reflex		Mirror Reflex		Through Beam	
	Model	NPN Output	DR-10N	DR-40N	DR-300N	DR-100NR	DR-1000N
	PNP Output	DR-10P	DR-40P	DR-300P	DR-100NR	DR-1000P	DR-2000P
Max Detecting Distance		10 cm	40cm	3M	1M	10M	20M
Emitter		Infrared LED			Red LED	Infrared LED	
Standard Object		10 x 10 cm (without white reflector)			56mm (opaque)		
Accuracy		<0.3mm			<0.1mm		
Power Supply		10-30V DC					
Current Consumption		<30mA					
Load Current		200mA Max.					
Response Frequency		400 Hz .					
Residual Voltage		1V Max.					
Output Method		Receive the beam ON or Cover the beam ON					
Indication		RED LED					
Loop Protection		Short Circuit & Polarity Reversed Protection					
Protection		IEC ,IP 66					
Operating Temperature		-25 to 70 ; Storage Temperature: -30 to 80					
Operating Humidity		35 to 85 % RH					
Illumination		Lamplight: <3000 Lux; Sunlight: <10000 Lux					
Vibration		10-55 Hz ; 1.5mm X,Y,Z continuous 2 hours					
Shock		500 m/S (50g) X,Y,Z continuous 3 times					
Wiring Method		3C/ 5 0 * 2M					
Housing Material		PBT resin + 30% fibre					
Wiring Material		PVC Oil Resistance					
Weight		85g		105g		160g	

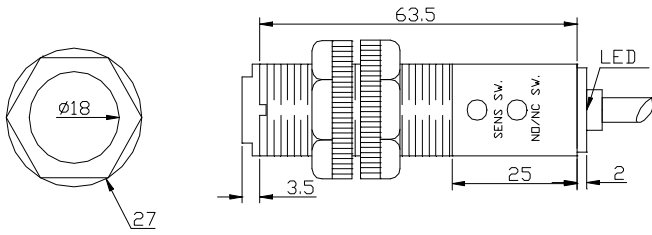
Order Information:

DR - 10 X X X - X
 1 2 3 4 5

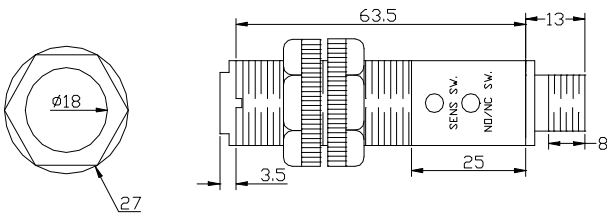
1. Distance: 5cm ~ 70cm (Difuse Reflex)
2. Output: NONE: Current Output (Standard), R: Voltage Output
3. Output: N- NPN or P- PNP
4. Emitter: NONE: Infrared LED (Standard), R: Red LED
5. Other: P: Socket
 C: Water Proof
 3M: Wire 3M (5M: Wire 5M)

DR Series

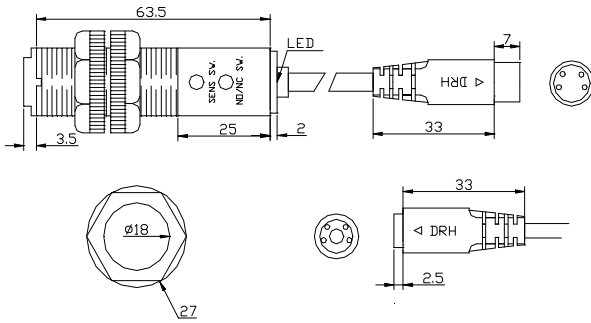
Dimensions:



Wire



Water Proof



Socket

Optional Accessories:

